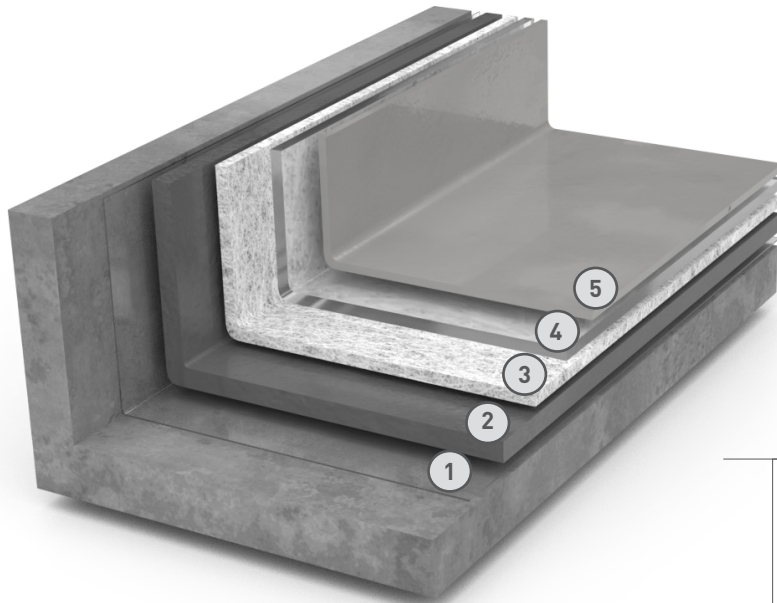


Protecto-Glass 860

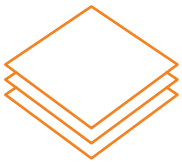
SYSTEM INFORMATION SHEET



100 to 110 mils (2,540 to 2,794 microns)

SYSTEM STEPS

- ① Primer 27 or 27C
- ② Protecto-Glass 860 with G-1 filler
- ③ Fiberglass mat
- ④ Protecto-Glass 860 (neat)
- ⑤ Protecto-Coat 800



REINFORCED

The Protecto-Glass 860 system has a fiberglass reinforcement layer which increases strength in corners and cold joints while protecting against future cracks from thermal expansion and settling.



CHEMICAL RESISTANCE

The Protecto-Glass 860 system is broadly chemical resistant and withstands exposure to various fuels, fluids, lubricants, and cleaning agents.



BRIDGES SMALL CRACKS

Protecto-Glass 860 is formulated to bridge hairline cracks extending the potential service life of the containment system.

Protecto-Glass 860

SYSTEM INFORMATION SHEET



PERFORMANCE DATA	TEST METHOD	RESULTS
	Compressive Strength (ASTM C579)	12,500 psi (86 MPa)
	Shore D Hardness (ASTM D2240)	75-80
	Tensile Strength (ASTM C307)	2,400 psi (16.5 MPa)
	Flexural Strength (ASTM C580)	8,600 psi (59.3 MPa)
	Coefficient of Expansion (ASTM D696)	12-15 x10 ⁻⁶ in/in/°F

SYSTEM STEPS	PRODUCT	THICKNESS	THEORETICAL COVERAGE RATE	PACKAGING	APPLICATION EQUIPMENT	RECOAT TIME*
Primer	Primer 27 / Primer 27C	3-4 mils (76.2-101.6 microns)	341-454 ft²/gal (8.4-11.2 m²/l)	Part A Part B	Short nap mohair roller / Brush / Spray	3 hours (min) 24 hours (max)
Basecoat	Protecto-Glass 860 with G-1 Filler	1/16" (1.6 mm) (62.5 mils/1,587.5 microns)	25 ft²/gal (0.6 m²/l)	Part A Part B G-1 filler	Trowel	Install glass mat immediately
Reinforcement	Fiberglass mat	1 oz chop	Area + 10%			
One layer of one (1) ounce fiberglass mat is used to help bridge small surface cracks and isolate their movement to the basecoat. It is applied to the wet basecoat and becomes an integral part of it, acting much the same as a reinforcing bar does in concrete.						
Saturant Coat	Protecto-Glass 860 (neat)	15-20 mils (381-508 microns)	80-107 ft²/gal (2-2.6 m²/l)	Part A Part B	Short nap mohair ribbed roller / Brush	4 hours (min)
Note: Prior to the application of any further coats, the troweled basecoat, 1oz glass mat, and saturant layers must be allowed to dry enough that they can be ground to provide profile for successive coats and remove any high spots or protrusions on the entire surface then it must solvent wiped. Use caution not to grind through the reinforcing layer						
Topcoat	Protecto-Coat 800	15-20 mils (381-508 microns)	80-100 ft²/gal (2-2.5 m²/l)	Part A Part B	Short nap mohair roller / Brush / Spray	4 hours (min) 96 hours (max)
*Recoat time at 75°F [24°C].						

Protecto-Glass 860

SYSTEM INFORMATION SHEET



INSTALL

This document is meant as a guideline for the installation of the system. Contact Dudick for further assistance prior to the installation of the system.

After applying the primer, mix Protecto-Glass 860 BC Part A, Part B, and G-1 Filler per the mixing instructions. Apply a 1/16" (1.6 mm) thick basecoat to a smooth, even finish using a trowel.

Adding reinforcement and saturant:

Before the basecoat begins to cure, press one layer of 1oz chopped strand fiberglass mat into the wet basecoat. Overlap all edges by 1-inch. Use a stiff, natural bristle brush or short nap roller and press the mat firmly into the basecoat, using a technique similar to hanging wallpaper, to remove all air pockets and wrinkles.

Saturate the fiberglass by mixing Parts A and B only, do not add the G-1 filler, to make a neat resin mixture. Roll vigorously using a short nap roller until the mat has lost its white color and turns translucent, paying special attention to overlaps and corners. Use enough resin to wet out the mat, but do not allow the saturant to puddle. Roll the wet fiberglass with a ribbed roller to remove any trapped air or wrinkles. Allow the basecoat and reinforcement application to dry overnight.

Before applying the topcoat, examine the fiberglass for any air bubbles or blisters. If these are present, they must be cut out and repaired using the procedure above. The topcoat will emphasize any imperfections in the fiberglass. Excessive blistering of the basecoat reinforcement may indicate inadequate rolling or too little saturant.

Prior to the application of any further coats, the troweled basecoat, 1oz glass mat, and saturant layers must be allowed to dry long enough that they create dust when grinding the entire surface, which provides a profile for successive coats and removes any high spots or protrusions that would affect the finish. Then, it must be solvent wiped. Use caution not to grind through the reinforcing layer.

SURFACE PREPARATION

Concrete must be prepared mechanically to remove surface laitance. Oils, grease, or other surface contaminants must be removed prior to surface preparation. Concrete must be free of curing compounds and form release agents. Abrade the surface to achieve an ICRI CSP 5 or greater surface profile. The prepared surface should have a nominal tensile strength of 250 psi (1.72 MPa) per ASTM D7234. Filled joints and cracks in the concrete may be coated, but if movement occurs the coating will crack with the movement of the concrete.

Concrete substrates must be checked for moisture prior to product application using the Plastic Sheet Test, ASTM D4263. If moisture is found to be present, contact Dudick for further recommendations.

MIXING

All mixing should follow the mixing instructions on the specific Product Data pages.

NOTE: The technical data presented in this document is accurate to the best of Dudick and Carboline's knowledge based on laboratory testing of the product(s) or system(s) described. Actual results in the field may vary depending on field conditions and application methods. The performance characteristics stated do not constitute a guarantee or warranty that the products will meet the stated results under all circumstances. Contact Dudick or Carboline Tech Service with questions.

00-46-1224-D138



Dudick is part of Carboline
1818 Miller Parkway
Streetsboro, Ohio 44241
+1-800-322-1970